

# BodiLink<sup>®</sup> Accessories

Durable, comfortable, adjustable



permobil



Premium pads uniquely designed to fit and adjust to the user

# Head Support

## Durability without compromise


With completely reimagined hardware and a variety of pad sizes and cover styles, you will never have to sacrifice the comfort you deserve for the durability you need. Experience precise alignment, greater surface contact, and more stable head positioning with the improved BodiLink Head Support.

Expanded hardware selection has improved strength and versatility

# Lateral Trunk Supports

## Perfectly shaped for comfortable, flexible support

BodiLink Lateral Trunk Supports are designed with your body's shape in mind. The modular design and unique wrist joints make setup and adjustment easy, and our numerous pad options including premium, mouldable, and rigid, ensure you will get the exact support you need.



Unique wrist joint on GT2 Hardware allows for pad rotation to match the user

The image shows a close-up of a black, curved lateral trunk support pad. A dashed blue line indicates the rotation of the pad. A callout line points to a joint mechanism on the back of the pad, which is connected to a larger black metal bracket (GT2 Hardware) mounted on a grey metal frame. The frame has a mesh backrest and a black strap with a white roller. A callout line points to a spring-loaded joint in the hardware, with a dashed blue line showing the spring's movement.

Spring-loaded joints help guide hardware alignment during set-up

GT2 Swing-Away  
Hardware pictured

# Lateral Pelvic/ Thigh Supports


## Unmatched compatibility

BodiLink Lateral Pelvic/Thigh Supports are compatible on virtually any power or manual wheelchair. The removable telescoping taper (TT), combined with four premium pad options, make BodiLink a versatile solution for all lateral support needs.

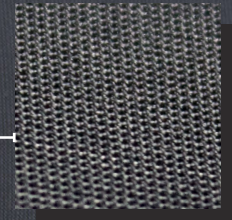
Telescoping taper hardware allows for precise adjustments

One-handed release operation of removable TT Series hardware

 **COMFORT**  
M2



Patented 2-ply, low-friction fabric transfers shear forces from the user to the fabric.



with **GlideWear**™ technology

# GlideWear<sup>®</sup> Covers

## Premium shear reduction included

Get the positioning and support you need with tissue protection in mind. Experience the benefits of up to 88% reduction in shear forces\* by choosing from our variety of exclusive GlideWear cover options.

GlideWear cover options are currently available on premium pads for BodiLink Head Support, BodyLink Lateral Trunk Support, and BodiLink Lateral Pelvic/Thigh Supports

\*Results of modified ISO 16840-2 testing of a foam cushion comparing a typical cover to a GlideWear cover.

ACTA-EMBRACE<sup>®</sup> and BodiLink<sup>®</sup> are registered trademarks of Permobil.

GlideWear<sup>®</sup> is a registered trademark of Tamarack Habilitation Technologies, Inc. Quantum<sup>®</sup> is a registered trademark of Pride Mobility Products Corporation. Quickie<sup>®</sup> is a registered trademark of Sunrise Medical.

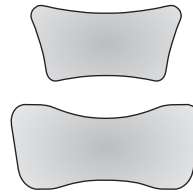
## Head Support hardware options



PT Series  
(Piano Taper)  
2 Styles

- Modular designs offer adjustability and customisation so pad placement reaches where needed, without compromise.
- New flip-down release available on PT hardware.

## Pad options



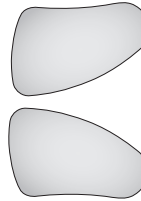
**Premium**  
6 Sizes  
3 Cover options  
2 Firmness levels  
Contoured

## Lateral Trunk Support hardware options



- GT2 Series (Gear Teeth).
- Mounting options listed below.
- Modular designs in both swing-away and fixed options.
- Winter/Summer GT2 mounting hardware available for Acta-Embrace® back support.

## Pad options



**Premium**  
6 Sizes  
6 Covers or no cover  
Mouldable and rigid styles in supportive and active shapes

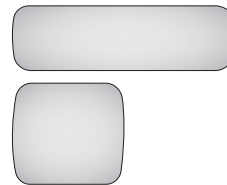
## Lateral Pelvic/Thigh Support hardware options



TT Series  
(Telescoping Taper)  
Power mounting &  
slot mounting

- Release lever position and orientation on removable style hardware is adjustable to fit user and caregiver needs and preferences.

## Pad options



**Premium**  
4 Sizes  
3 Cover options

## Hardware Compatibility

	Acta-Series	Permobil®	Quantum®	Quickie®	Other
Head Support	•	• ◊	• ◊	◊	OEM backrests
Lateral Trunk Supports	•	• ◊	• ◊	◊	Cane mount
Lateral Pelvic/Thigh Supports	n/a	•	•	•	Manual wheelchairs with solid seats

• = Direct mount ◊ = Indirect mount (attaches to an Acta-Series back support with Compass® Power Mount Hardware)