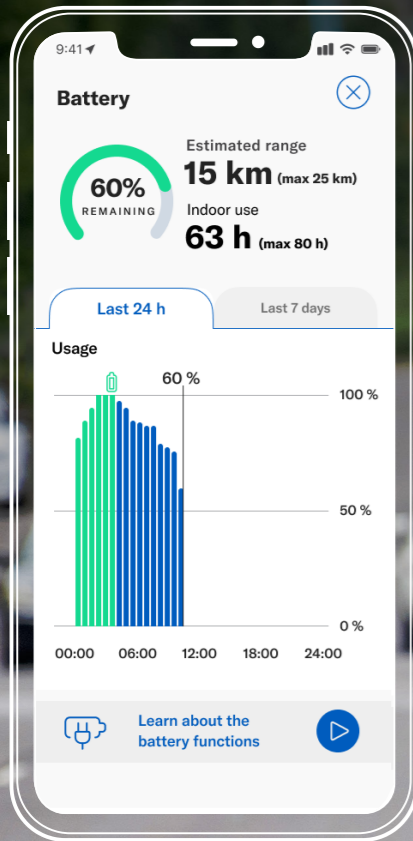


Power wheelchairs

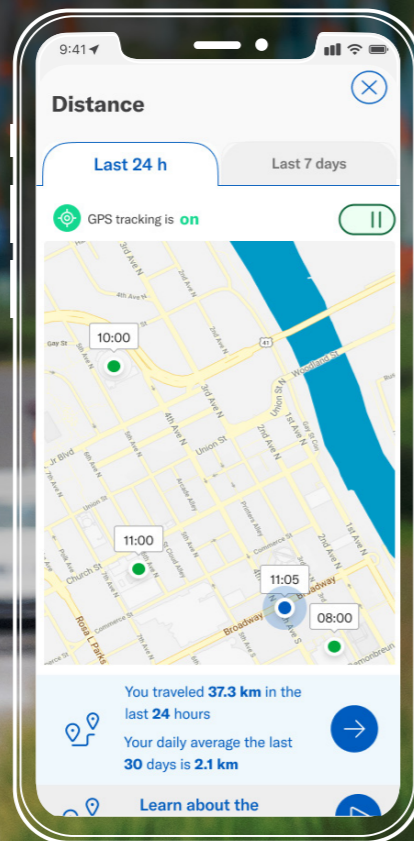
M-Series



permobil



Battery status and travel range estimates help you know how far you can go



Integrated map illustrates daily and historic travel behaviour



MyPermobil

Power Platform and +Connect form the core digital infrastructure of this power wheelchair, combining advanced assistive technology with smart connectivity. Connected from the factory*, this chair is online and ready for proactive service, remote insights, and efficient support from day one. The connected chair reflects Permobil's commitment to reliability, transparency, and confidence over the life of the chair.

**From 1 July, 2026, for chairs delivered in Australia.*



More adventure

The Permobil battery and VoltPro charger work together to provide you with up to 25% greater driving distance, reduced charging times, and longer battery life. Use the MyPermobil app to get even more from every adventure with seat activity tracking, battery range estimates, and an integrated map.



Driving range up to 32.2km



Reduced charging times



Longer battery life



More freedom

Corpus®, our most capable power wheelchair seating system, now provides you with even more positioning options. Enhanced stability on the M-Series enables you to optimise your repositioning, functional reach, and power drive positions for even greater freedom of movement.



Full suspension at any elevation, seat position, or drive speed

Reach for more

ActiveHeight™ and ActiveReach™ combine seamlessly to give you the ultimate advantage in accessing your environment. Seat elevation with integrated forward tilt creates the most innovative, functional, and stable seating solution on the market today.

	M3	M5	MVS
↑ ActiveHeight	12"	14"	12"
↶ ActiveReach	20°	20°	Standing

10° of no charge ActiveReach with ActiveHeight



Up to 5.1km/h elevated drive speed

3.5" rearward shift during elevate for added stability and reduced footprint

3 points of contact for added stability

12"

Conquer more

FlexLink™ and FlexLink Pro™ suspension balances stability, traction, and ride comfort for optimal performance and advanced vibration reduction. DualLink suspension on the M Corpus VS optimises stability in standing without sacrificing active suspension in any position. The result is an unbeatable stand and drive experience. Factory optimised and adjustable suspension adapts to your needs and environment. Be ready to handle any adventure with high-powered LED lights to guide your way.



FlexLink
M3 Corpus



FlexLink Pro
M5 Corpus

2X more powerful
LED lights for true
pathway lighting and
enhanced visibility



M3 Corpus

Meticulously engineered to help you maintain better positioning, feel more secure, and reduce driving fatigue so you can conquer daily activities with ease. Its compact base offers manoeuvrability in tight spaces without sacrificing performance. Featuring the innovative FlexLink suspension geometry with independent castor swing-arms helping to keep you stable and in control as you traverse the obstacles in your world.



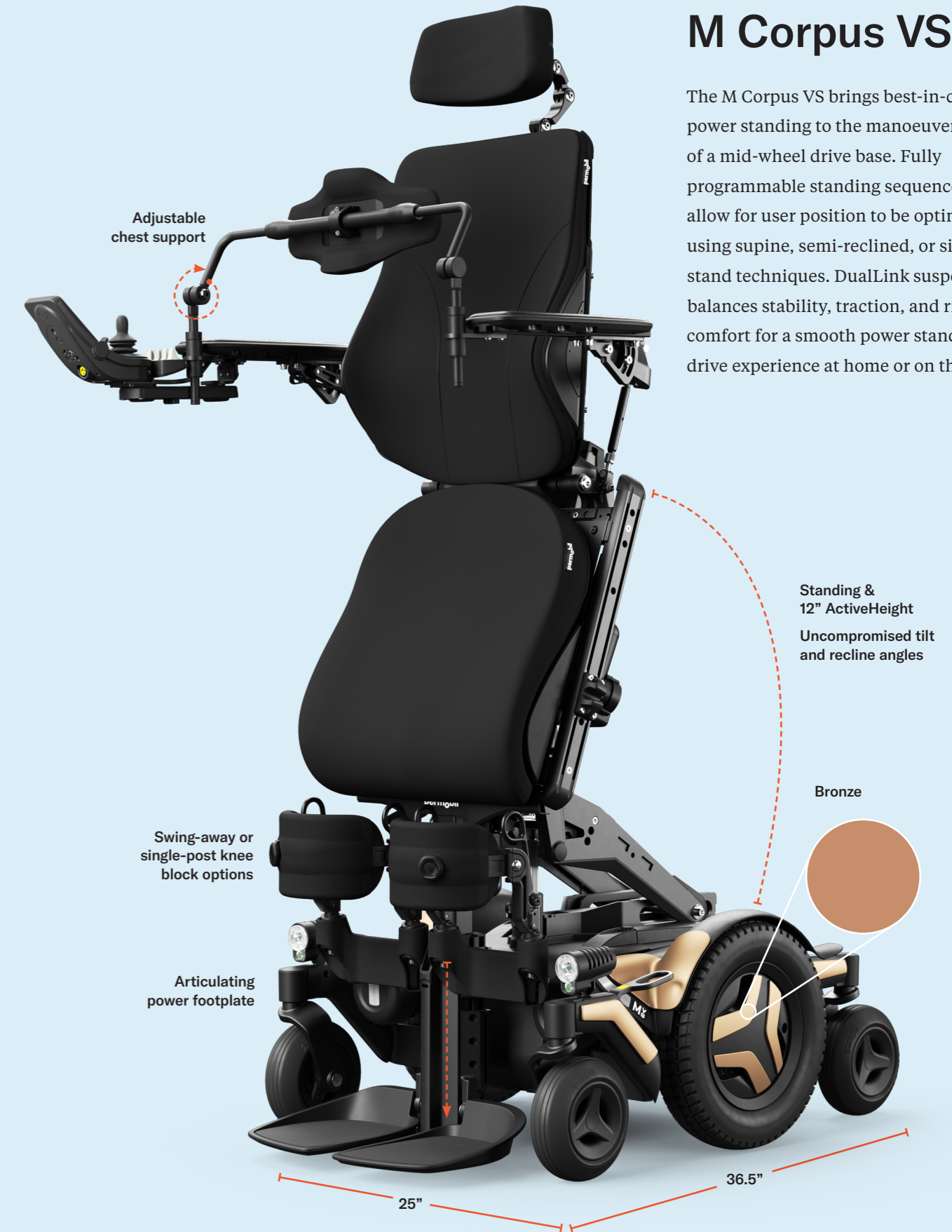
M5 Corpus

Take control with high-performance motors enabling a top speed of 10 km/h and exceptional low-end torque that lets you pivot like a pro. Experience unsurpassed stability and ride comfort with FlexLink Pro independent drive wheel suspension. The M5 Corpus will take you to new heights with increased stability and full suspension even in 14" of seat elevation.



M Corpus VS

The M Corpus VS brings best-in-class power standing to the manoeuvrability of a mid-wheel drive base. Fully programmable standing sequences allow for user position to be optimised using supine, semi-reclined, or sit-to-stand techniques. DualLink suspension balances stability, traction, and ride comfort for a smooth power stand and drive experience at home or on the go.



Swing-away knee supports

The swing-away knee support, for use on Corpus VS models, are 75% lighter than previous single-post knee supports and offer support through the standing sequence. Thanks to flexible on-chair storage, they are easy to add or remove as needed.



Release mechanism designed for a wide variety of hand function

Seat-rail mounted parking spot for convenient on-chair storage

Integrated BOA® Fit System for a precision fit

BOA is a trademark of BOA.

BodiLink on Corpus

Specially designed for the Corpus seating system, BodiLink accessories feature best-in-class hardware. Offering true anatomical support with the highest level of adjustability and comfort to meet your individual positioning needs.

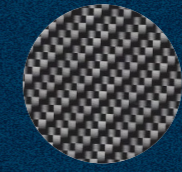


Head Support— Easy to adjust piano hinge and double-taper joints for maximum strength

Lateral Trunk Support— Designed for enhanced comfort and trunk alignment with unique wrist joint rotation adjustability allowing pad to match body contours

Lateral Pelvic/Thigh Support— Easily position along the UniTrack rail with 360° pad adjustment and user-friendly quick release lever

Accent options



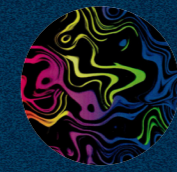
Carbon Fiber



Mossy Oak® Breakup® Country™



Water Lily



Liquid Fusion*



Midnight

Arctic

Violet

Sky

Aqua

Spring

Canary

Sunset

Chili

Flamingo

Platinum

Bronze

Gold

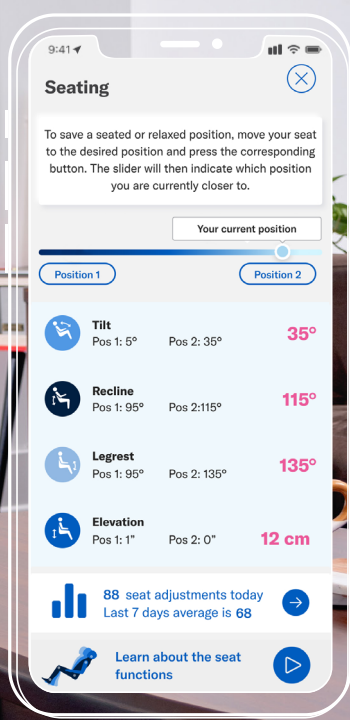
Please note: Actual product colours may vary from colours shown in this brochure

*Liquid Fusion is currently only available on the Corpus VS models



180° of power recline
50° of posterior tilt

90° – 180° of legrest elevation



Live seating angles and activity tracking in MyPermobil

Specifications

	M3 Corpus	M5 Corpus	M Corpus VS
Maximum user weight	150 kg	150 kg	120 kg
Maximum speed	10 km/h	10 km/h	10 km/h
Range	32.2 km*	32.2 km*	32.2 km*
Base width	24"	25"	25"
Base length	35.5"	37.5"	36.5"
Base turning radius	20.5"	21.5"	22"
Ground clearance	3"	3"	3"
Recommended battery type	Group 24	Group 24	Group 24
Weight including batteries	184 kg	192 kg	193 kg
Drive electronics	R-net 120A	R-net 120A	R-net Power Platform 120A
Seat-to-floor height	17.5", 18.5", 19.5" [†]	17.5", 18.5", 19.5" [†]	17.5", 18.5", 19.5" [†]
Seat elevation	Optional 12"	Optional 14"	12"
Drive wheel	14"	14"	14"
Castors	7"	8"	7"
Tilt options	Posterior: 0° – 50° ActiveReach: 5°, 10° & 20° (up to 136 kg)	Posterior: 0° – 50° ActiveReach: 5°, 10° & 20° (up to 136 kg)	Posterior: 0° – 50° Standing
Legrest angle - power	85° – 180°	85° – 180°	85° – 180°
Backrest angle - power recline	85° – 180°	85° – 180°	85° – 180°
Backrest height	20", 23" – 28" (1" incr.)	20", 23" – 28" (1" incr.)	23" – 28" (1" incr.)
Seat depth	14" – 22" (1" incr.)	14" – 22" (1" incr.)	14" – 22" (1" incr.)
Seat width	17" – 23" (2" incr.)	17" – 23" (2" incr.)	17" – 23" (2" incr.)

* Actual driving range will vary based on driving and battery conditions. | [†] Measured without cushion. | Specifications may vary based upon configuration. Please refer to your owners manual for warnings and instructions for the safe operation of your wheelchair in a variety of driving conditions. Chair weights are approximate and include base, batteries, power seat functions, and seating system without accessories.